

## EasyOne™ Test Modes and Parameters

### FVC test:

FVC	MEF25 (FEF75)
FEV1	MEF50 (FEF50)
FEV3	MEF75 (FEF75)
FEV6	MEF25-75 (FEF75-25)
FEV1/FVC	PEF
FEV1/FEV6	Tzero
FEV/VC	BEV
FEV1var	EOTV
FEV6var	PEFT
FVCvar	FET

### FVL test (add. to FVC):

FIVC
PIF
MIF25 (FIF75)
MIF50 (FIF50)
MIF75 (FIF25)

### SVC test:

VCmax
VCin
VCex
IC
ERV
IRV
VT
Rf

### MVV test:

MVV
BPM

## Specification and Technical Data

<b>Dimension:</b>	83 x 158 x 43mm
<b>Weight:</b>	245g
<b>Measuring Accuracy:</b>	Volume: ± 2% or 0.050l Flow: ± 2% or 0.020l/s PEF: ± 5% or 0.0200l/s MVV: ± 5% or 5l/min
<b>Resolution:</b>	Volume: > 1l Flow: 4ml/s
<b>Measuring range:</b>	Volume: ± 12l Flow: ± 16l/s
<b>Resistance:</b>	approx. 0.3cm H <sub>2</sub> O/l/s
<b>Display:</b>	64 x 160 pixel graphic display
<b>Data entry:</b>	14-key keyboard
<b>Power supply:</b>	(2) AA batteries

<b>Battery service life:</b>	400 tests approx.
<b>Data memory:</b>	700 tests approx
<b>Print out:</b>	direct to printer or via PC, plain paper A4
<b>Data communication:</b>	direct: printer, modem-telephone, e-mail With EasyWare to PC and beyond
<b>Languages:</b>	english, german, french, italian, spanish, portuguese, polish, japanese, norwegian, finnish, danish, greek, swedish, dutch, other languages on demand
<b>Predicted values:</b>	ERS (ECCS), Roca, Austria, NHANES III, Knudson 1976, Knudson 1983, Crapo, Morris, Cherniak, Berglund, Gulsvik, Hedenstroem, Asia 1-4, JRS2001, Gore, Pereira, Finnish. Paediatrics: Zapletal, Dockery, Hsu, Hibbert

## ndd TrueFlow™ advantages:

- no sensor in contact with sample
- no influence of humidity, barometric pressure, contamination
- no calibration
- no cleaning, no maintenance
- simple and economic consumables
- easy to operate outside lab with operator prompts and diagnostics
- extremely high accuracy for low flows
- no down time

## All competitors:

(turbine, Fleisch, pneumotach, heated wire)

- sensor always in contact with sample
- extremely sensitive to contamination (measuring errors)
- regular calibration needed
- need for cleaning
- need for filters
- difficult to operate outside labs
- limited low flow detection
- down time for maintenance



# EasyOne

The new standard in spirometry



point of care /  
bed side diagnosis



doctor's office /  
primary care



pulmonary function  
laboratories

epidemiological /  
COPD prevalence studies



**The ndd TrueFlow™ technology**

- sensor is never in contact with the sample
- ndd TrueFlow is absolute flow (no influence by contamination, humidity, droplets, temperature)
- ndd TrueFlow is also used by major OEM manufacturers (Ventilators, Anesthesia, Spirometers etc.)



**Endorsed, worldwide proven**

- by NASA, MIR space programs in use for crew monitoring in outer space
- ATS, ERS, CSA, JAPAN, FDA, CE, NIOSH, OSHA, GOLD, BOLD, Platino
- drug makers for clinical and marketing studies
- major Asthma / COPD drug companies
- top references in USA, EU, Japan, Asia, Australasia, Latin America

**Keypad**

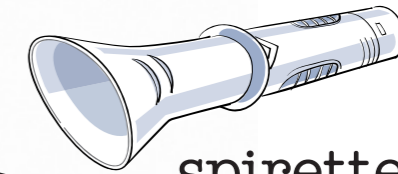
- alpha numeric
- data entry like cell phone

**The display**

- 5 lines with ample space for clear communication
- used for guidance to achieve high grade tests
- gives instant results and diagnosis

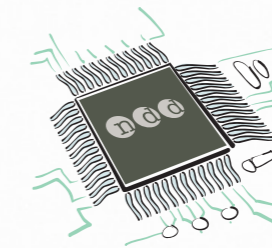
**Lowest running costs**

- different consumable options; single use and reusable spirettes to match the user's priority
- no costly calibration nor any other maintenance
- no down time



**spirette™**

- the best docking for adults and children
- hygienic single patient consumable for full contamination control



**Vast memory**

- up to 700 patients (first in first out)
- secured memory, no accidental loss when battery low
- multiple units may be used with one cradle and one **EasyWare™** PC software



**Report**

- plain paper A4 or letter size in colors with clear and lasting print
- ready to be filed and stored
- direct USB connection to printer
- export to 'word', 'excel' etc.

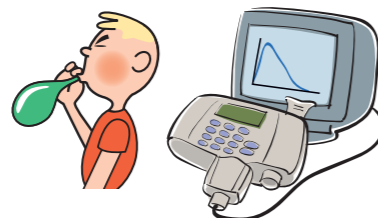


Actual size



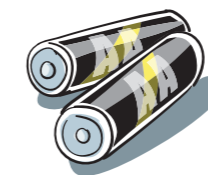
**Cradle (base station)**

- for standby positioning of the **EasyOne™**
- for communication from the **EasyOne™**:
  - directly to printer, serial or USB
  - to PC (by the **EasyWare™** software)
  - to modem / telephone (studies, home use etc.)
  - direct encrypted e-mail transmission



**EasyOne-line™**

- for connection of the **EasyOne-line™** to a PC
- direct real time FV and FT curve
  - reject / accept feature
  - children incentive screen



**Battery powered**

- 2 AA standard batteries last for approximately 400 tests
- no need for re-charging, no down time
- works everywhere, any time